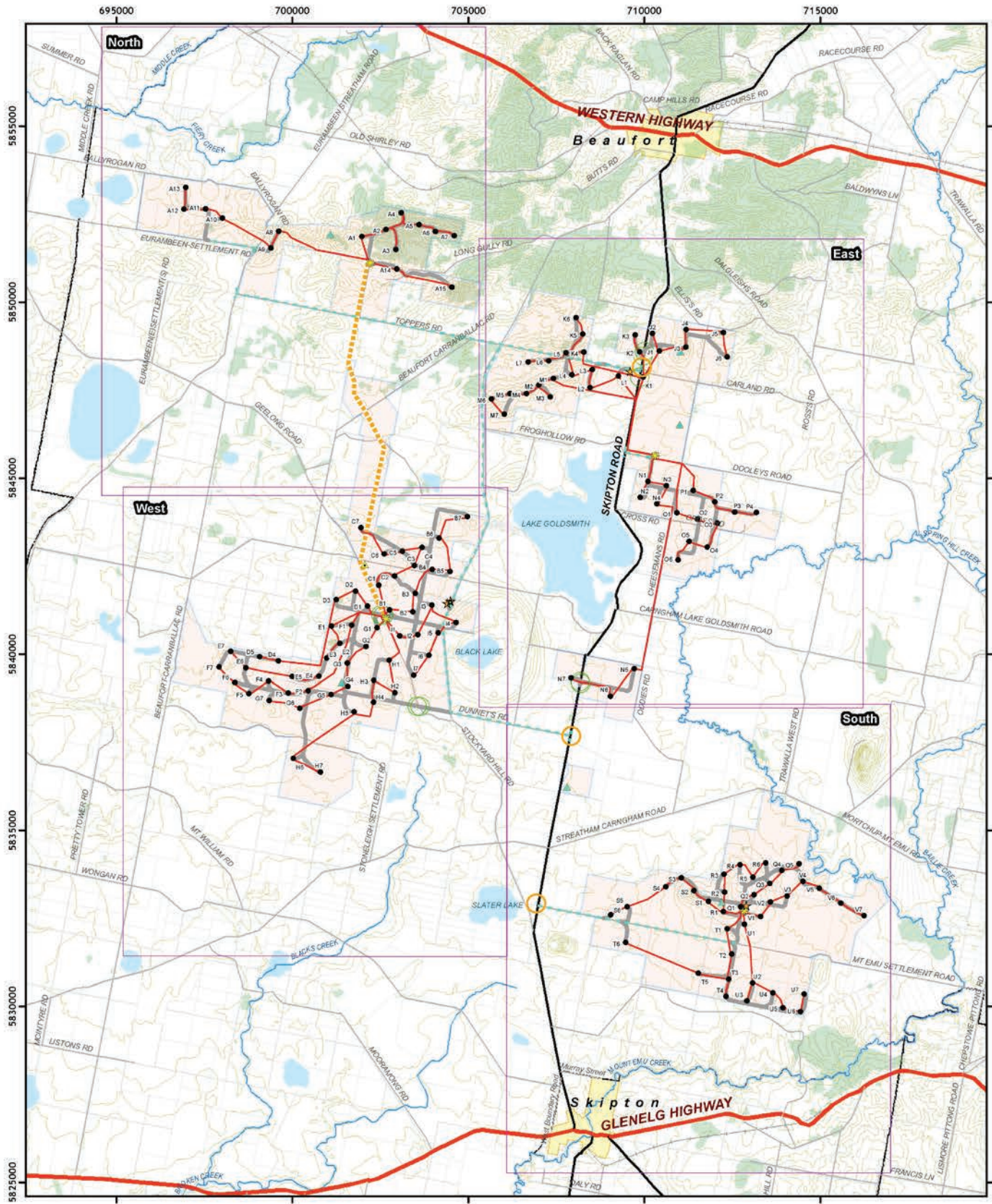


Figure 1 – Amended WEF Indicative Layout Plan



<p>STOCKYARD HILL WIND FARM PTY LTD</p> <p><small>Disclaimer: Stockyard Hill Wind Farm Pty Ltd gives no warranty in relation to the data (including accuracy, reliability, completeness or suitability) and accepts no liability for any loss, damage or costs (including consequential damage) relating to any use of the data in this map. © Stockyard Hill Wind Farm 2014</small></p>	<ul style="list-style-type: none"> ● Wind Turbine Generator ★ Site Compound/Batching Plant ⚡ Substation ▲ Permanent Met Mast ▲ Temporary Met Mast ● Business Identification Sign ○ Alteration of Access to RDZ1 ○ Creation of New Access to RDZ1 — Permit Boundary — Roadworks Maximum Extent — Internal Overhead Powerline — Underground Cable — Access Track 	<ul style="list-style-type: none"> — Highway — Major Roads — Minor Roads — Watercourses — Rail — Wetlands or waterbodies — Major vegetation areas — Local government areas — Townships — Parcels — Contours 10m 	<p>Stockyard Hill Wind Farm</p> <p>Amended Wind Energy Facility Indicative Layout Plan</p> <p>• DATE: 28/04/2016</p> <p>• SCALE: 1:100,000 @ A3</p> <p>• STATUS: Draft</p> <p>• PROJECTED: ALU</p> <p>• CHECKED: Clayton</p> <p>• APPROVED: PManiott</p> <p>0 1.25 2.5 5 Kilometres</p> <p>Amended Indicative Layout Plan - 20180428 - Page 1 of 5</p>
			<p>• DRAWING NO: 0A</p>