



origin



Origin's Cullerin Range Wind Farm, NSW



STOCKYARD HILL WIND FARM PROJECT OVERVIEW

November 2011

\$1.7 MILLION

In excess of \$1.7 million per annum of direct benefits to landowners, the community and Council

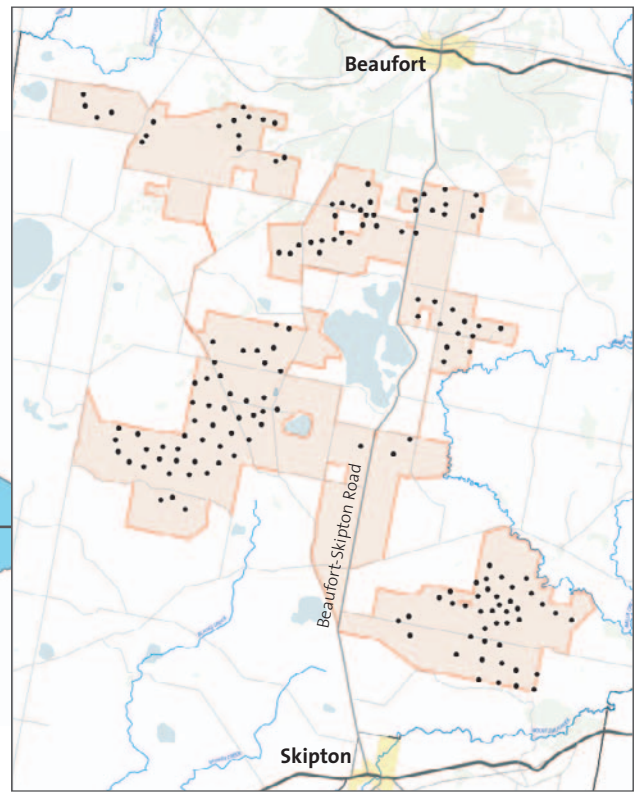
280,000

Equivalent power generated to the demand from 280,000 homes per annum*

The Stockyard Hill Wind Farm is an approved wind energy project consisting of 157 turbines located approximately 35 km west of Ballarat in Victoria's central highlands.

The project is expected to deliver significant benefits including the creation of ongoing jobs, rates to the local Council, rent to participating landowners and a community investment program in excess of \$100,000 per annum.

*Based on a capacity factor of 40%, an average household consumption of 5.708 MWh per annum and a long term average forecast.



Planning permit

On 29 October 2010, the Victorian Minister for Planning granted approval for 157 turbines and infrastructure at the Stockyard Hill Wind Farm.

Detailed site investigations have been undertaken over the past few years including ecological, heritage, visual, noise, socio-economic, traffic and transport and others. These formed the basis of the project's planning application.

During 2011 a range of environmental assessments and site investigations were conducted to fulfil the conditions of planning and environmental permits. The design of the wind farm was also optimised to meet these conditions.

Key project stats

- 157 turbines on a site covering approximately 156 km²
- Five electrical substations
- Underground electrical cable network, linking each turbine to a substation
- Above ground powerlines linking each substation
- Projected yearly output of 1,650,000 GWh per annum

Becoming involved or learning more

Involvement with local groups and individuals has helped to inform and shape the project and remains a high priority.

We offer many opportunities for the community to become involved in the project, through:

- one-on-one meetings
- information sessions (interest in sessions can be registered via the contact details below)
- consultation with interest groups
- newsletters
- website - www.stockyardhillwindfarm.com.au
- project hotline - 1800 753 730
- email address - stockyardhillwindfarm@originenergy.com.au

Next steps

During 2012, Origin will undertake a range of environmental, engineering and planning assessments to ensure the proposed wind farm complies with its Federal and State Government approval conditions.

Before construction commences a range of assessments needs to be completed, including flora and fauna surveys, further wind and background noise monitoring, topographical and technical surveys.

A series of plans will also be developed, these include but are not limited to:

- traffic and transportation during construction
- work force housing during construction
- fire management
- cultural heritage plans
- environmental management plan

These plans will be developed and approved prior to construction of the wind farm.

The wind farm layout can undergo many alternations as the results of different assessments are incorporated into the layout. Origin will keep the community informed throughout this process, and we welcome feedback to help us shape the project to minimise its impact while increasing benefits to the community.

.....

**FOR MORE INFORMATION VISIT
WWW.STOCKYARDHILLWINDFARM.COM.AU
 OR CALL OUR PROJECT HOTLINE
 ON 1800 753 730**

.....